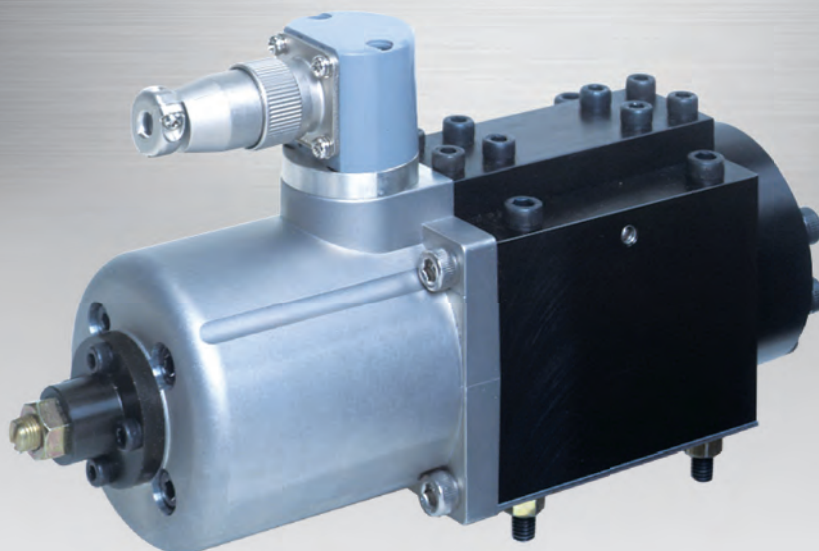


Industrial Servo Valves **Power Guide**

PG300,500,800



Enhanced Performance, Smaller and More Responsive!

The Power Guide servo valve is back, lighter, and with even stronger performance than ever before.

Compatible with older models through a specialized adapter, and as easy to use as ever, Power Guide servo valves combine high performance and convenience with the toughness to work in dirty environments, changing the face of industrial servo valves.

Features

Compact

Smaller and lighter, the unit has only one fifth the volume of previous models.

High responsivity

45Hz/-3dB

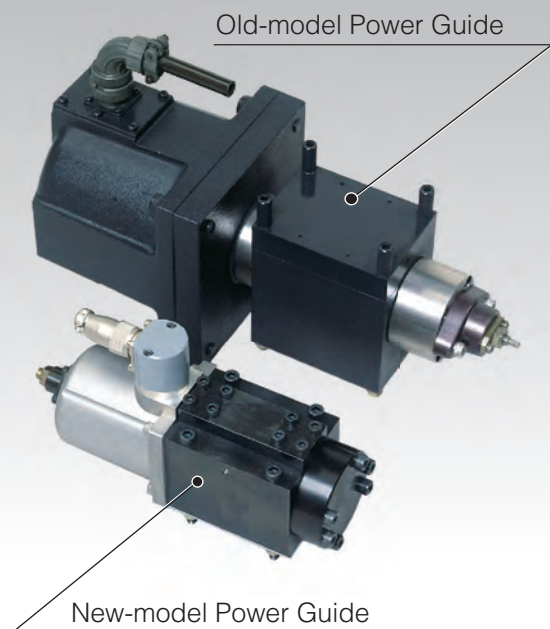
Power Guide servo valves feature high responsivity and high gain, with low hysteresis, achieving high levels of precision in EPC and CPC.

The structure uses a double pilot format proven over extended use. The simple servo valve structure is even usable with general hydraulic oil*.

*: Hydraulic oil of NAS11 grade may be used, but there may be problems with NAS11 or lower if there is a high concentration of debris of 5 μ or smaller.

Exterior view of the Power Guide valve

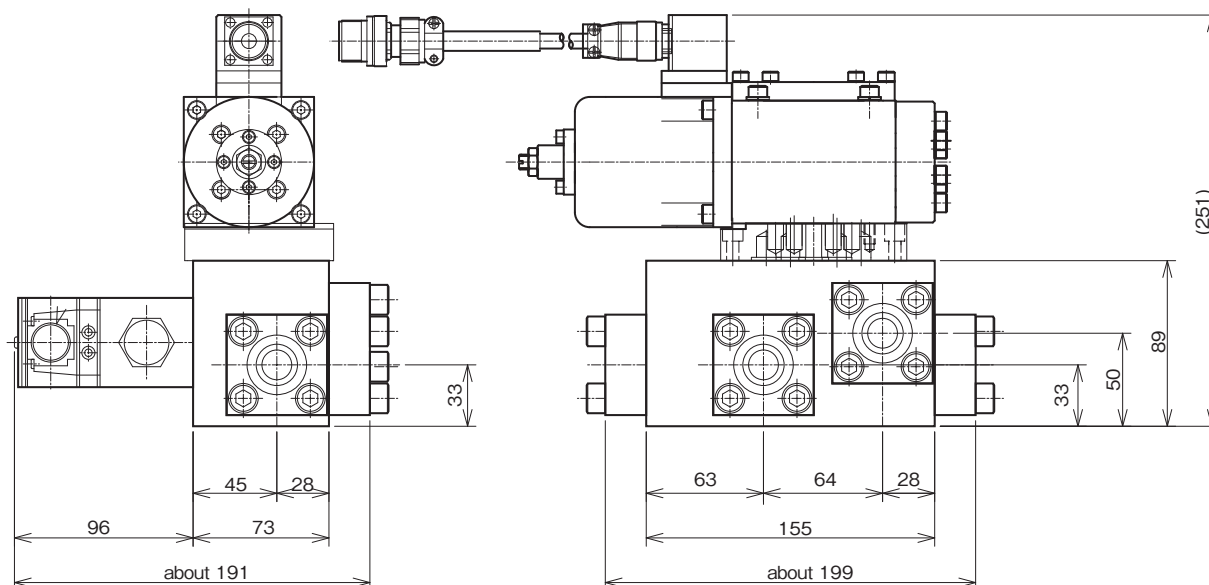
Comparison with the previous products



Specifications

Model	PG800	PG500	PG300
Dimensions	114×224×70		
Rated pressure	2~14MPa		
Rated flow L/min	80	50	25
Return-side pressure resistance	Internal drain		
	1MPa		
Return-side pressure resistance	External drain		
	3MPa		
Internal leakage L/min	4.5	3.5	3
Response of frequency	45Hz (-3dB)		
Hysteresis	1%		
Ambient operating temperature	0 ~ 50°C		
Hydraulic oil temperature	10 ~ 60°C		
Hydraulic oil contamination grade	NAS grade 11/Weight grade 103		
Line filter	8μm (β _s ≥200)		
Moving Coil resistance value	18.5Ω		
Rated current	±200mA		
Recommended dither signal (100Hz)	2Vp-p		
Fixed orifice	φ 0.4mm		
Hydraulic oil	Mineral oil (water glycol under development)		
	Fatty acid ester		
	Phosphate ester		

Dimensions



We reserve the right to change the specifications in this catalog without prior notice to improve and update our products.



NIRECO CORPORATION

●**Kyobashi Office**

Asako Kyobashi Bldg., 1-6-13, Kyobashi, Chuo-ku, Tokyo, 104-0031, Japan

Telephone : +81-3-3562-2201 Facsimile : +81-3-3564-4316

●**Hachioji Office**

2951-4, Ishikawa-machi, Hachioji, Tokyo, 192-8552, Japan

Telephone : +81-42-660-7409 Facsimile : +81-42-645-7737

Website : www.nireco.com E-mail: info-process@nireco.co.jp